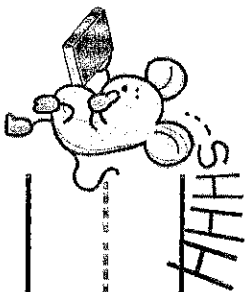
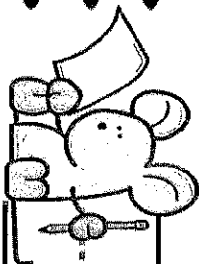
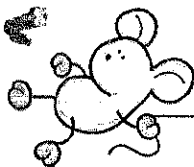
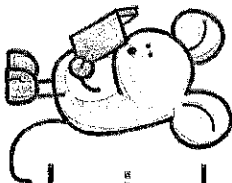


Name _____

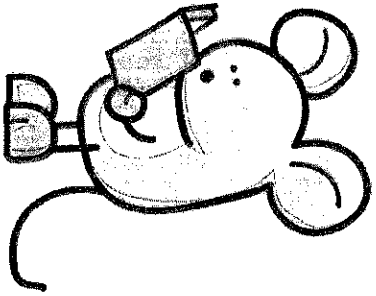
Date _____

Unscramble the sentences. Write them below.
Be sure to use capitals, spaces, correct punctuation and proper letter formation.

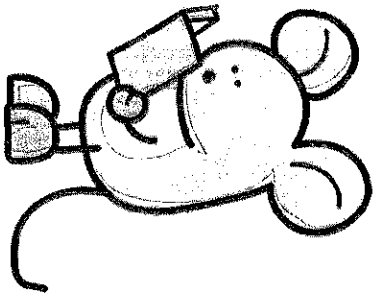


Four sets of horizontal lines for writing, each corresponding to one of the illustrations above. Each set consists of a top line, a middle line, and a bottom line.

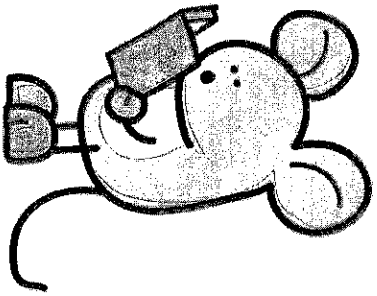
little



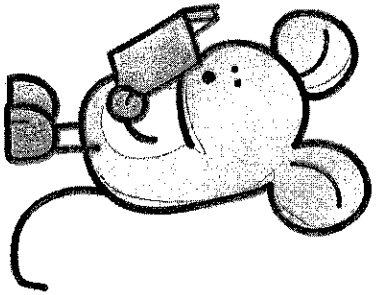
Henry



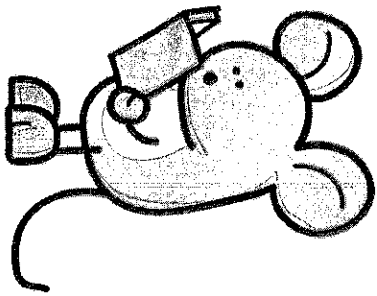
gray



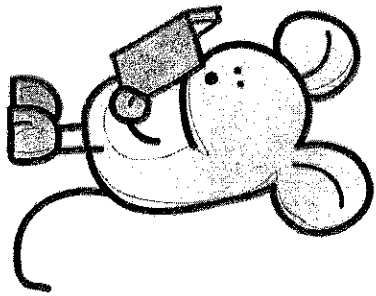
is



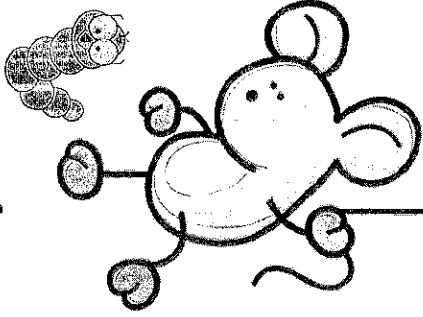
mouse.



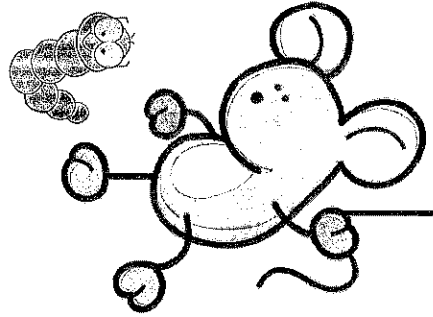
a



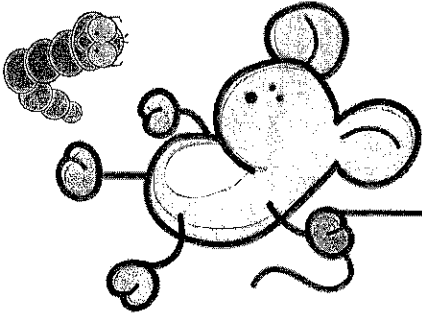
pet



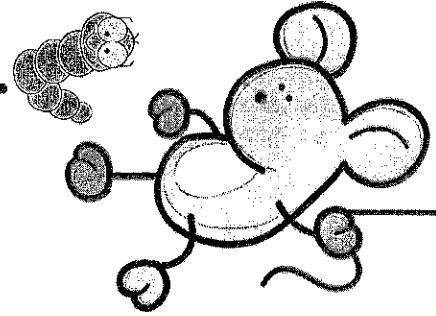
Henry



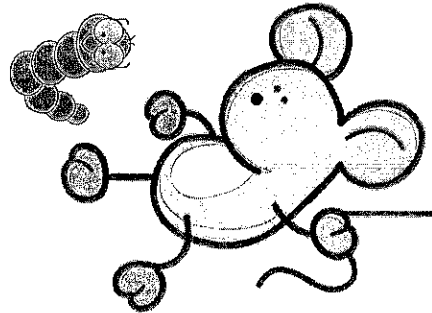
worm.



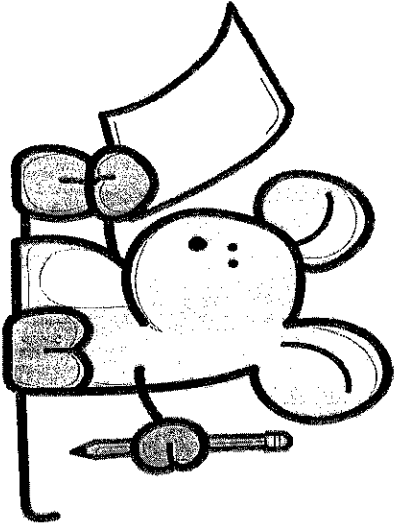
has



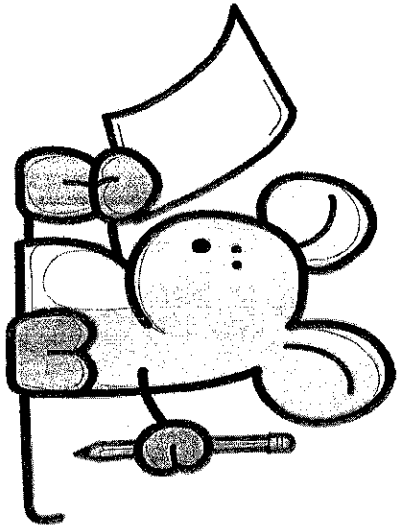
d



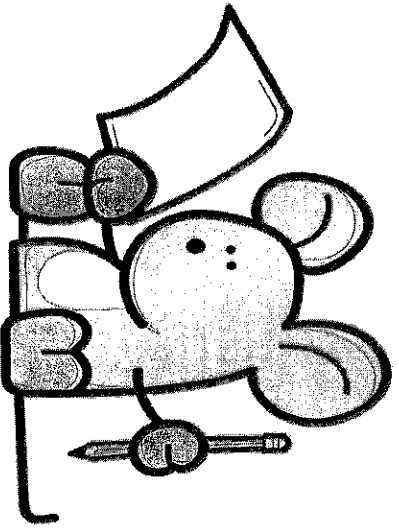
first



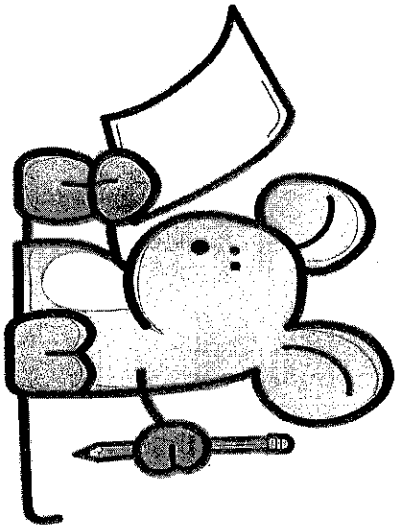
Henry



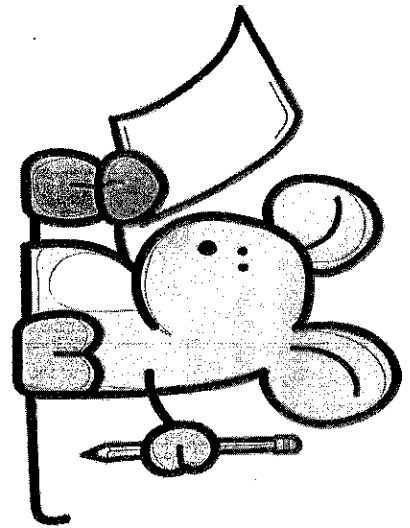
grade.



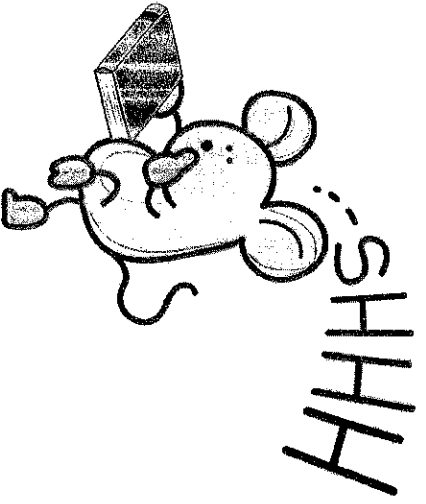
is



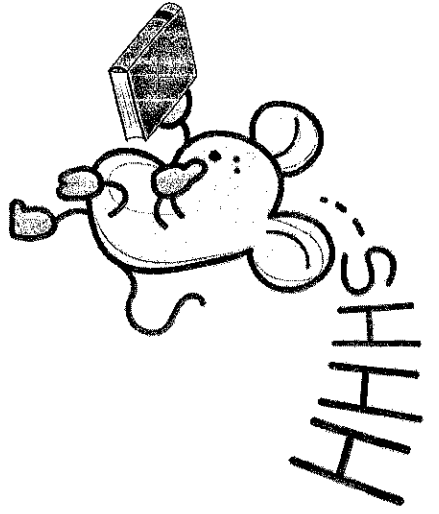
in



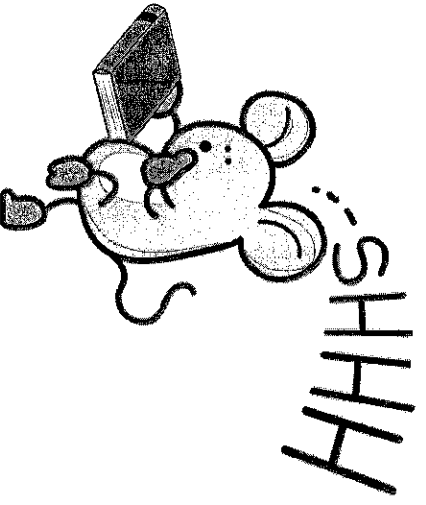
in



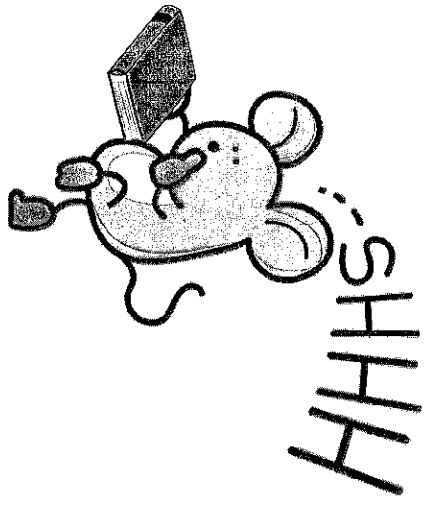
Henry



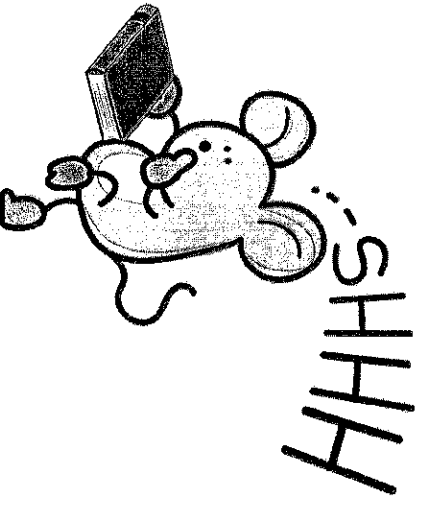
the



is



library.



quiet

